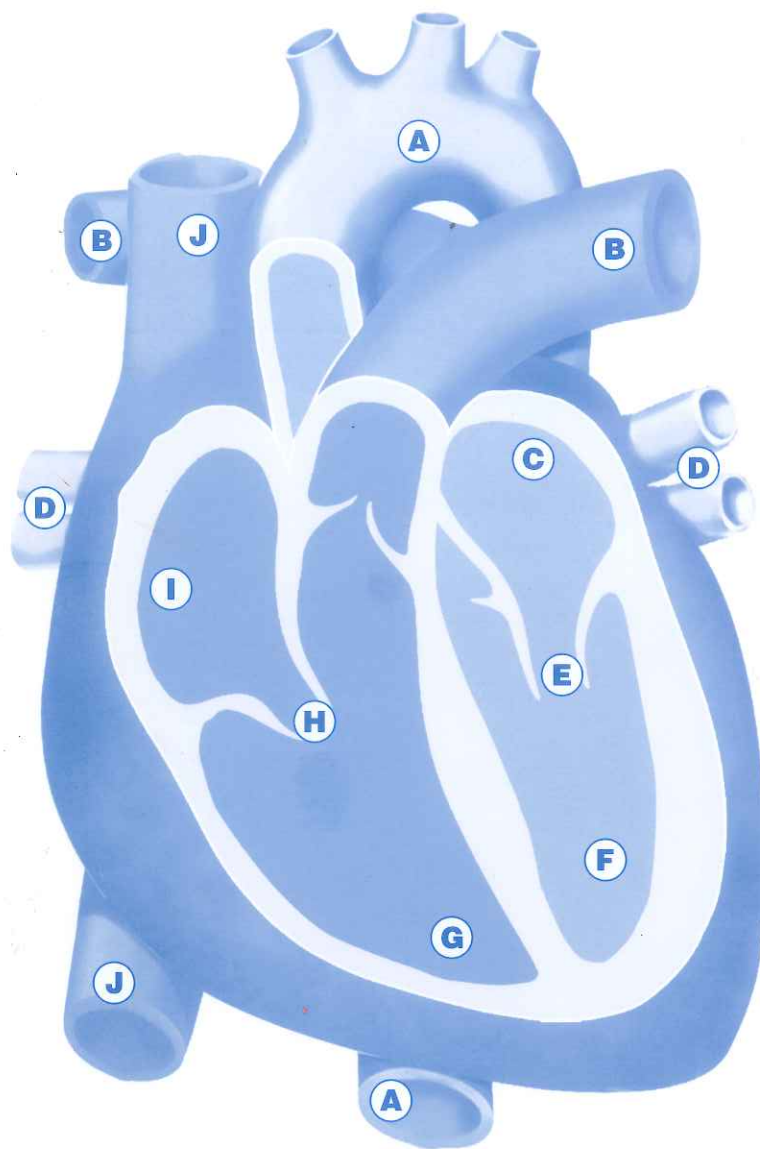


# Heart Quiz



- A. \_\_\_\_\_
- B. \_\_\_\_\_
- C. \_\_\_\_\_
- D. \_\_\_\_\_
- E. \_\_\_\_\_

- F. \_\_\_\_\_
- G. \_\_\_\_\_
- H. \_\_\_\_\_
- I. \_\_\_\_\_
- J. \_\_\_\_\_



[www.LearningResources.com](http://www.LearningResources.com)

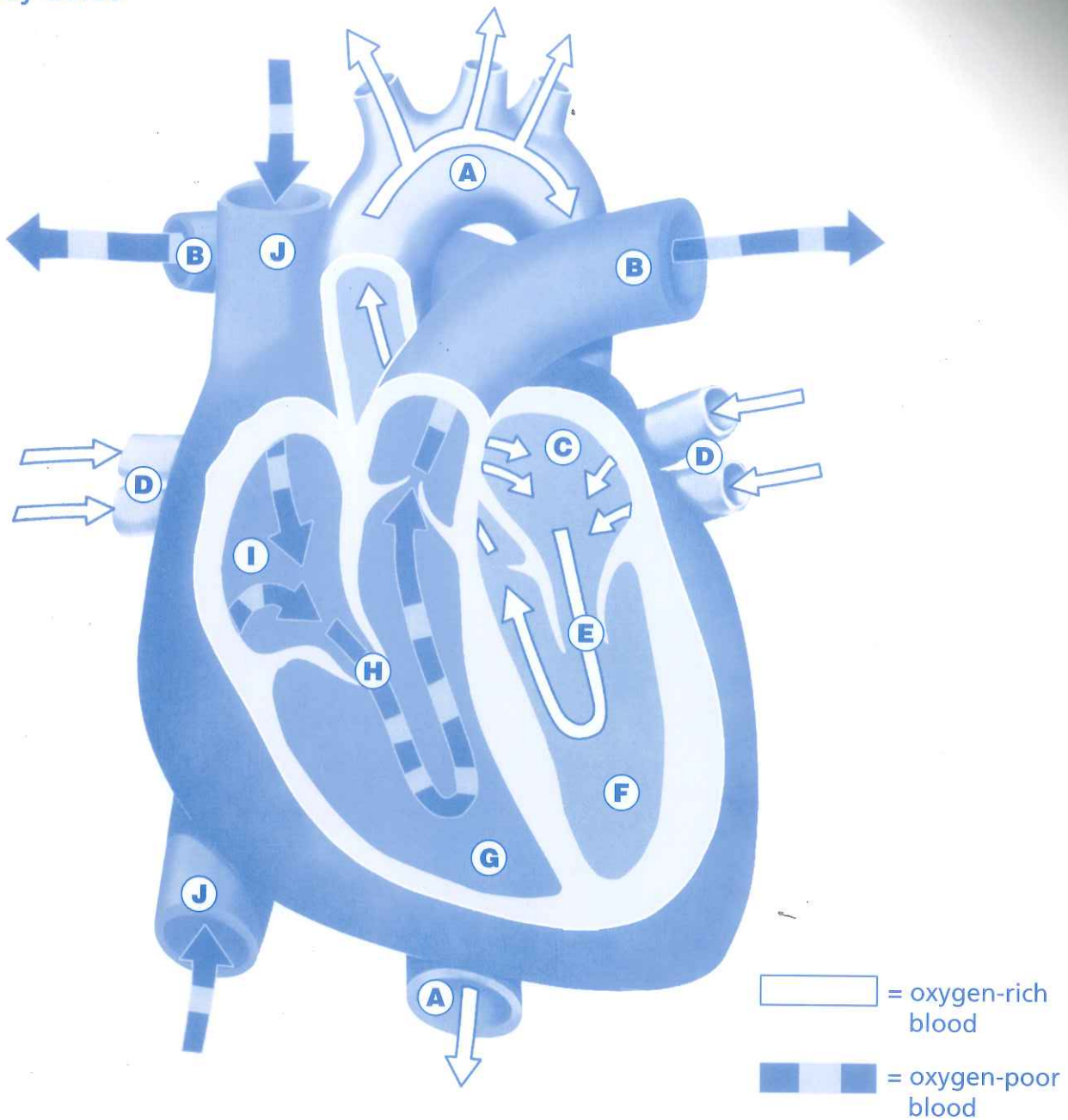
Visit our website to write a product review or to find a store near you.

**RISQUE D'ÉTOUFFEMENT.** Petites pièces. Interdit aux enfants en dessous de 3 ans.  
**ERSTICKUNGSGEFAHR.** Kleine Teile. Nicht geeignet für Kinder unter 3 Jahren.  
**PELIGRO DE ASFIXIA.** Piezas pequeñas. No se recomienda para menores de 3 años.



© Learning Resources, Inc., Vernon Hills, IL (U.S.A.)  
 Learning Resources Ltd., King's Lynn, Norfolk (U.K.)  
 Please retain our address for future reference.  
 Made in China. LRM3535-GUD  
 Fabriqué en Chine. Informations à conserver.  
 Made in China. Bitte bewahren Sie unsere  
 Adresse für spätere Nachfragen auf.  
 Hecho en China. Conservar estos datos.

## Heart Study Guide



**A.** Aorta (to body)

**B.** Pulmonary arteries (to lungs)

**C.** Left atrium

**D.** Pulmonary veins (from lungs)

**E.** Mitral valve

**F.** Left ventricle

**G.** Right ventricle

**H.** Tricuspid valve

**I.** Right atrium

**J.** Veins (from body)